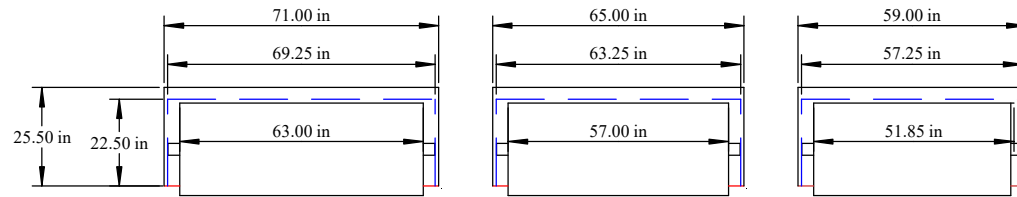
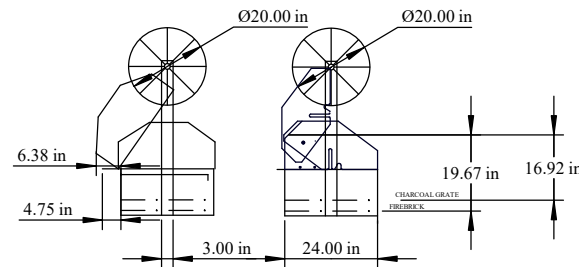
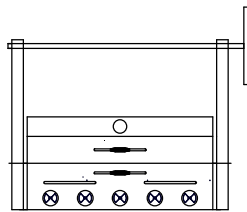
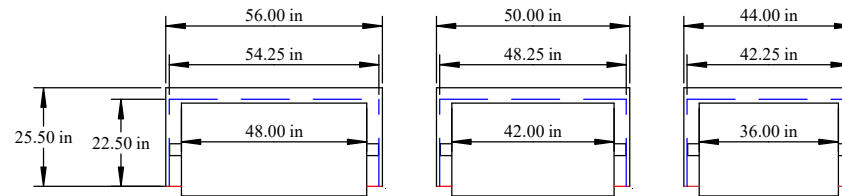


Scottsdale - Kingman - Tuscan Grill drop in dimensions with side mounted firebox



Scottsdale - Kingman - Tuscan Grill drop in dimensions.



Scottsdale Cooker Drop In

Cut out Represented by blue dashed line, is the actual counter top cut out.

All grills use the same front to back dimensions. Front to Back 23"

The left to right dimensions varies based on size
Left to Right 48" = 54.25, 42" = 48.25 36" = 52.25
Depth of grill is 12"

Flange around will support the weight

No need to have any support under grill

Note: It is good to have area under grill for when grill heats up. Bottom may expand in center up to .25"

Red line Represents Counter top. It is noted 2" to allow grill to slide back for a built in Look.

Kingman Lid versus Scottsdale Lid

48x24 Scottsdale Cooker

King Man Lid requires 7 - 8" for lid to fully open

Scottsdale Lid has zero clearance to open, but does limit the height that the grill grate can raise.

Overall the grilling grate will raise 15" above the fire grate.